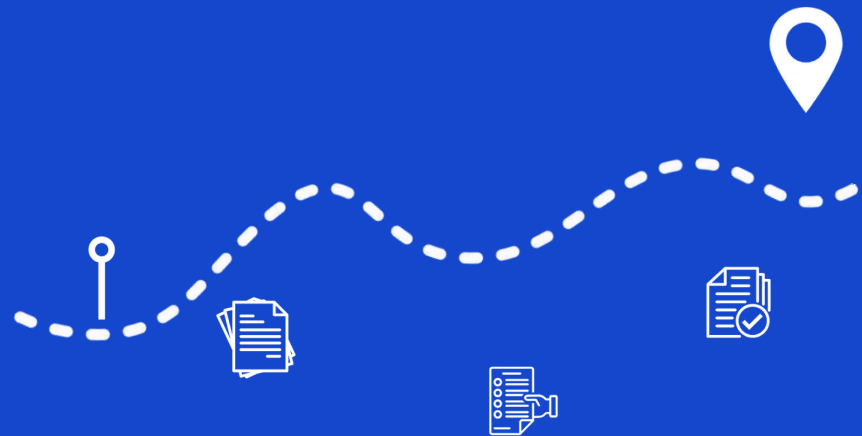


AI-Driven E-document Framework for Seamless Supply Chain Document Exchange



Speaker:

Zack Dikhtyar, CEO

Agenda

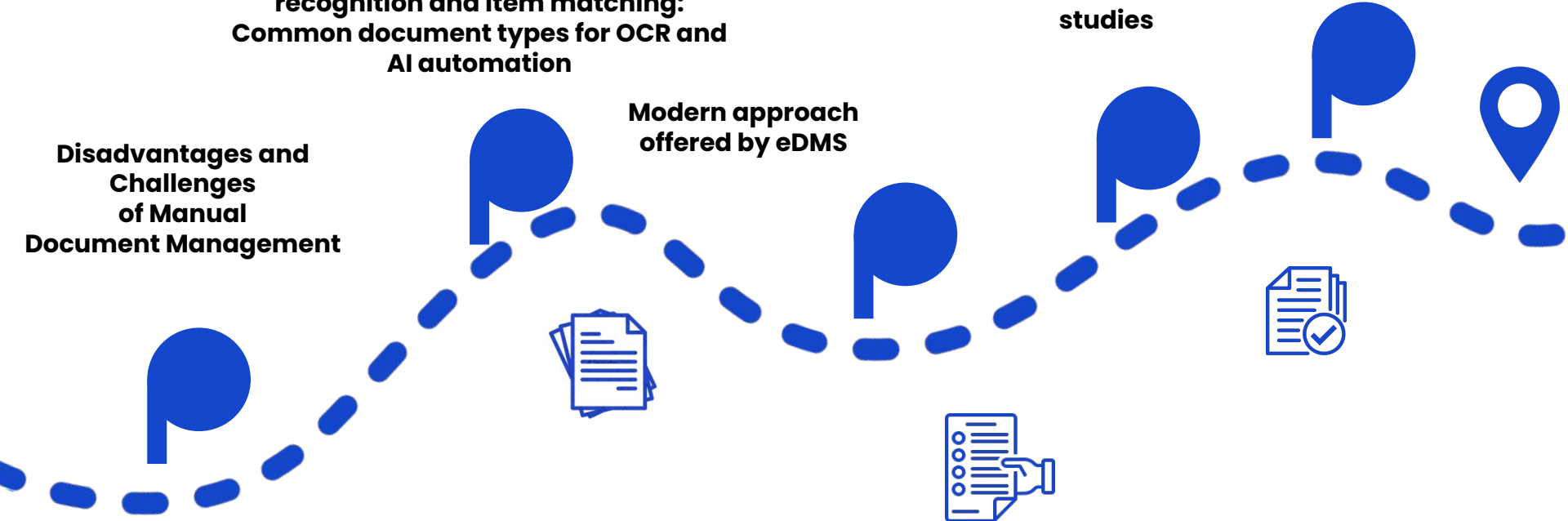
**Current options for document recognition and item matching:
Common document types for OCR and AI automation**

Document automation case studies

Breakdown of costs and benefits offered by AI-automation

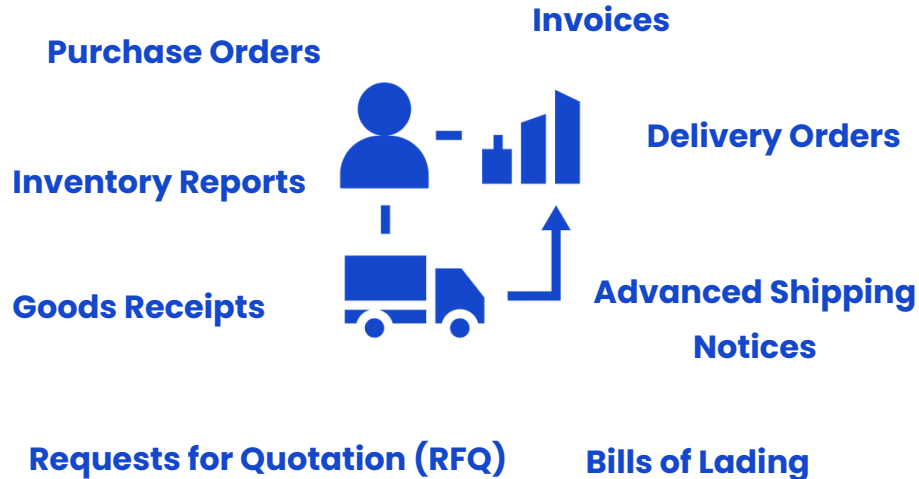
Disadvantages and Challenges of Manual Document Management

Modern approach offered by eDMS



Enterprise Document Flows in Supply Chain

Supply Chain Documents



Legal and Operational Documents

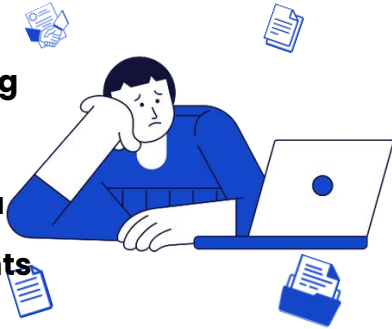


Disadvantages of Manual Document Management

Reduced efficiency and productivity

Risk of document loss or damage

Difficulties in tracking and retrieving documents and data from those documents



Higher administrative and labor costs

Poor document security and compliance risks

Slower response times to business needs

Why Go Digital

40%

of document-related costs can be reduced when using document management systems

around
\$49,600

is saved in salary costs if a regular-sized company starts using a DMS



up to
80%

of time spent file-sharing can be saved when using a DMS

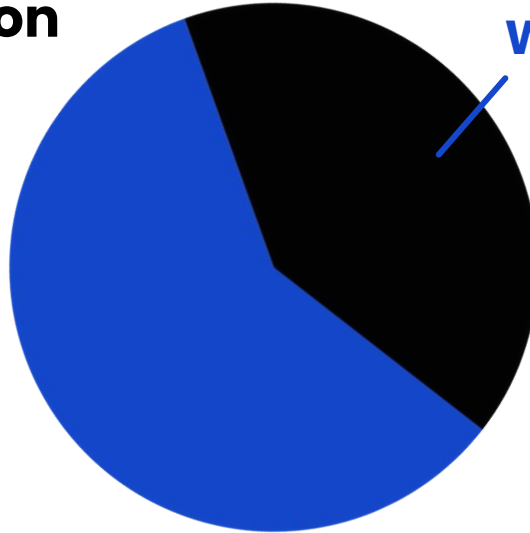
45%

of companies spent at least 1 week to have a contract signed

Supply Chain Documents

Challenge: lack of master data and incomplete EDI integration / automatization

59% of US companies in Supply Chain adopted EDI for their daily operations



**What about the other
41%?**

Source: Data Interchange. (2023, October 5). *Over 41% of companies at risk without EDI.*
<https://datainterchange.com/over-41-of-companies-at-risk-without-edi/>

While EDI systems work smoothly, not all your partners will have the necessary infrastructure to use them.

Main Challenges with Invoice Recognition



Some invoices are difficult to recognize due to complicated design and layout.

There are chances of mixing up invoice number with invoice date as well as the columns of Quantity with Price or Total amount

Handwritten marks are not always processed equally: they should sometimes be ignored, other times taken into account

Decimal separators and “.00” in cents need to be processed appropriately.

Even after successful OCR (character recognition) data is still not structured.

Item matching against ERP item list still needs to be done manually .



Finding Solutions: Three Steps to Take



OCR

Optical character recognition (OCR) is used to convert scanned images or documents into editable text. For digitally rendered files (such as DOCX, Excel, and some PDFs), OCR may not be necessary, as these formats often retain text data directly.



Structure detection

Document structure detection identifies key elements like invoice number, date, sender, EIN, address, and values, followed by validation (e.g., $\text{Quantity} \times \text{Price} = \text{Amount}$, summing to Total). This process produces a standardized document, such as in PIDX format.



Item matching

Matching each item from the invoice to the closest matching item in the ERP system's item list involves using an AI-based natural language model. This model analyzes product descriptions from the ERP item list to identify the best matches for invoice items.

Results must be human-approved to ensure the quality of final data and can then be imported to the ERP.



Available Software for Document Recognition: OCR and AI Automation Options

There are some products and SaaS on the market providing document structure recognition:

They are available as a web platform, API-only, or as applications for iOS and Android.

Some options like SAP or Dynamix365 provide integrations with ERP systems .

However, none of those offer item matching;

Integration with existing EDI (Electronic Data Interchange) and DMP (Document Management Platforms) is not provided by either of them.

 docparser

 DOCUPHASE

 UiPath®

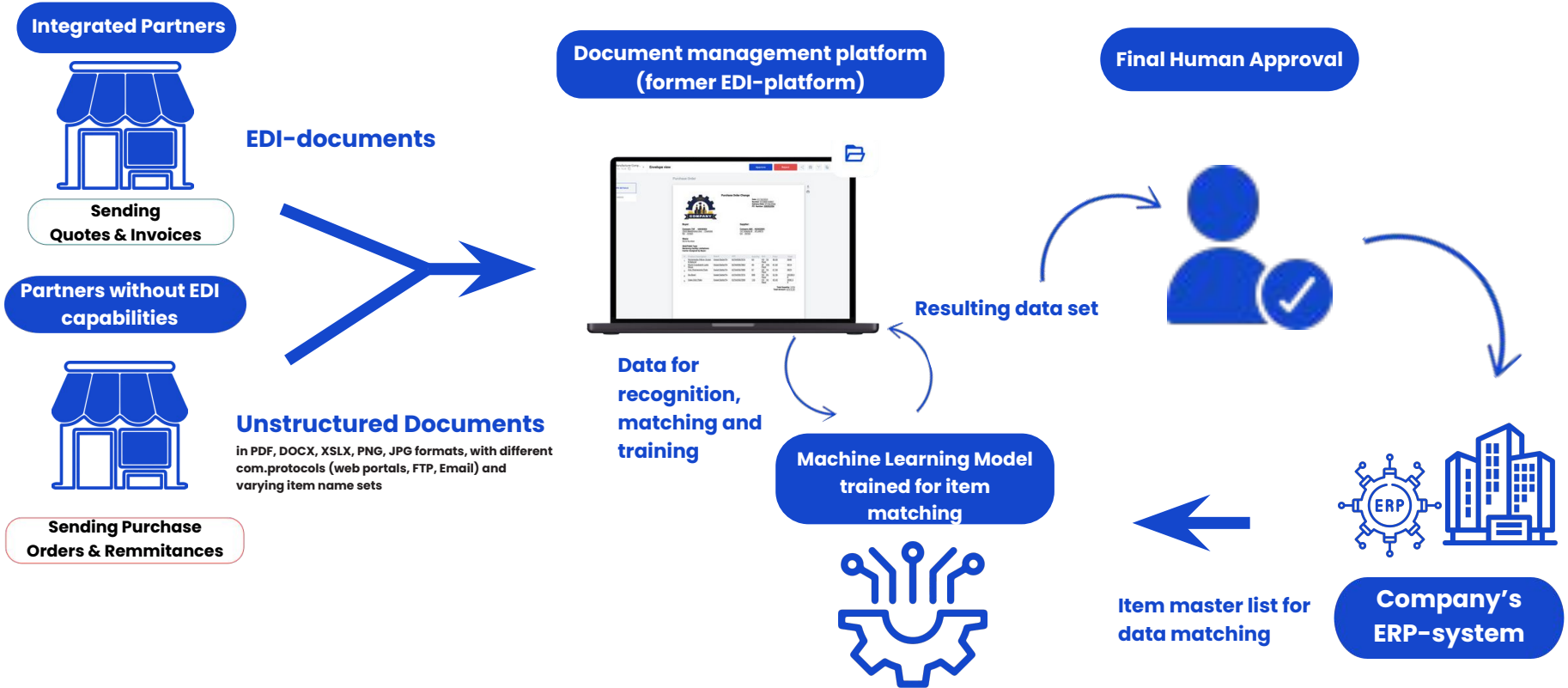
 DOCSUMO

 Nanonets

ROSSUM

 LlamaIndex 
@llama_index

AI Document Posting Framework



AI Document Posting Framework Description

Ongoing Daily Processes:



Document Ingestion

Hundreds or thousands of documents of predefined types (quotes, invoices, orders, specs) arrive via different channels (web portal, procurement platform, FTP, email, etc.) and in various formats (PDF, DOCX, PNG, JPEG).

OCR Processing

Image files are processed using OCR to extract text-based content.



Block Detection and Decomposition

Once all documents have a text-based representation, they undergo block detection and decomposition (e.g., `DocumentType = "Invoice"`, `DocumentDate = "November 15, 2024"`, `SenderEIN = 352589633`).

Data Storage

Detected data is stored in a structured format (e.g., PIDX). **However, at this stage, items are not yet matched with the ERP's item list.**



AI-Based Item Matching

The AI-based item matching tool pairs items from the document with corresponding items in the sender's list.

Approval Process

All invoices are sent for approval by a responsible and experienced person. Correct matches enhance the system's reliability, while incorrect matches are used to retrain the AI model.



ERP Integration

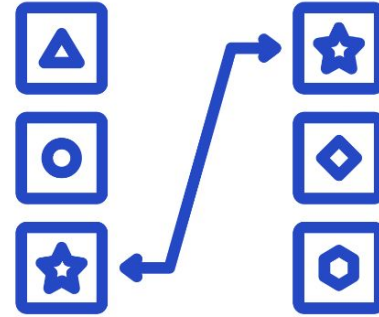
Recognized and matched invoices, in the predefined format, are sent to the enterprise ERP system as regular EDI documents.

AI Document Posting Framework Setup Process

There are two AI-models to be used for such framework:



**Document Structure
Detection Model**

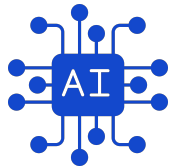
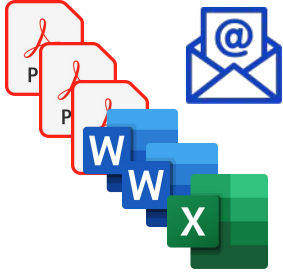


Item Matching Model

At the initial stage, and each time there are significant changes to the document type set, design, layouts, or major updates to the item list, the accuracy of the AI models needs to be reevaluated.

If necessary, the models should be retrained using the new data. This process may be ongoing, but it requires a supervisor to act as a quality judge for the system.

Unstructured Documents



AI Models



Purchase Order Change

COMPANY

Date: 07/18/2024
Number: 873458743897
Delivery Date: 12/29/2024
PO Number: 328664396

Buyer:
Company TOF - 64646464
2154 Woodglen Ave - Charlotte
NC - 27654

Supplier:
Company ABC - 930432081
137 Atlanta St - Atlanta
GA - 30216

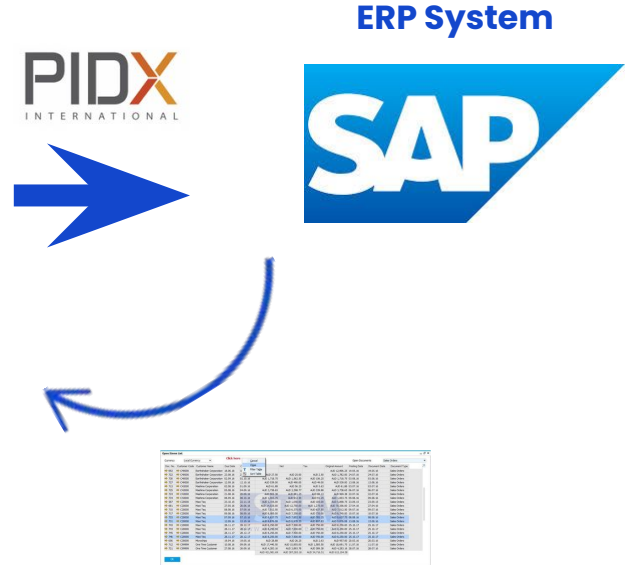
Store:
Store Number

Skid/Pallet Type:
Receiving Facility Limitations:
Carrier Assigned by Buyer:

#	Product Description	Brand	UPC	Quantity	Unit	Price	Total
1	Rectangular Pillow, Ocean & Natural	Sweet Butterfly	657843567876	65	H9 : 18: Pack	56.00	3640
2	Black Crosshatch Latte Mugs	Sweet Butterfly	657843567865	45	4E : 100: Pack	67.00	3015
3	Acid Champagne Flute	Sweet Butterfly	657843567888	87	H9 : 18: Pack	67.00	5829
4	Big Bowl	Sweet Butterfly	657843567875	899	H9 : 10: Pack	32.56	29238.8
5	Deep Dish Plate	Sweet Butterfly	657843567898	123	H9 : 18: Pack	45.45	5590.3

Total Quantity: 1211
Total Amount: 47313.23

Structured Documents



Automatic Item List Synchronization

ROI and Cost-Benefit Analysis

With an average company processing 500 transactional documents per month, or around 6000 documents annually.

Manual Handling

**20
mins**

spent processing one document

On average, it takes 15 minutes to create one document, with around 40-80 line items of information that need to be retyped manually in every transactional document.

An additional, 5 minutes are spent correcting errors and double-checking the information.

\$8

in labor costs per document

With the average wage of 25\$ per hour for employees working with document processes.

+

other operational costs

That includes the use of paper and ink, document storage, mailing fees, and others.

\$~50,000

annually in labor
and document
processing costs

AI -automated processing

**0.5
mins**

spent processing one document

With ready-to-use templates and streamlined document workflows in place.

\$0.6

cost per document processing

Including costs for labor and software license for 5 users.

\$~9,780

annual total cost for the first year

Including software license for 5 users, project rollout, support and maintenance, manual labour costs involvement.

\$~5,780

annual total cost for the second and subsequent years

Including software license for 5 users, support and maintenance, manual labour costs involvement.

ROI of ~ \$40,220 (80.44%) in the first year of adoption and \$44,220 (88.44%) in the subsequent years

Takeaways

- ✓ **AI may eliminate up to 90–95% of manual job for document re-entry (including item matching document type detection, document structure detection).**
- ✓ **This innovation is available for all EDI-users, small & medium companies and big enterprises with little or no changes to their existing internal IT-infrastructure.**
- ✓ **Implementation and maintenance of such functionality needs little to no AI competences.**
- ✓ **Human approval of documents still needed but take 10–20 times less effort than manual processing. Probably this inconvenience will be eliminated in next generation of AI in a few years.**
- ✓ **This approach may be used for all supply chain documents (Invoice, Purchase Order, Shipping Notice, Bill of Landing, Field Service Ticket, Remittance advice), and most other document types (agreements, contracts, application forms).**
- ✓ **Standards and code lists play even more important role of “common language” than before.**

Q & A





Thank You for Your Time!



Zack Dikhtyar, CEO
dz@docstudio.com

